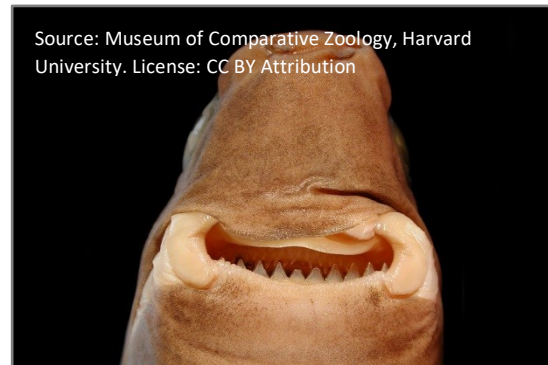


## Cookie-cutter Shark, *Isistius brasiliensis*

Report Card assessment	Sustainable		
IUCN Red List Australian Assessment	Refer to Global Assessment	IUCN Red List Global Assessment	Least Concern
Assessors	Stevens, J.		
Report Card Remarks	Small and only occasionally caught		

### Summary

The Cookie-cutter Shark is a widespread oceanic species with a patchy distribution. It is too small to be regularly taken by fisheries and although it is occasionally caught by pelagic longlines, and sometimes in midwater trawls and plankton nets there are no significant threats to this species. Therefore, the species is assessed as Least Concern (IUCN) and in Australia, Sustainable (SAFS).



### Distribution

The Cookie-cutter Shark is widespread throughout temperate and tropical waters. In Australia, it is reported from isolated localities off Queensland, New South Wales, Tasmania and Western Australia (Last and Stevens 2009).

### Stock structure and status

There is currently no information on population size, structure, or trend for the species.

### Fisheries

The Cookie-Cutter Shark is occasionally caught by pelagic longlines, and sometimes in midwater trawls and plankton nets, but its small size means it has low catchability and there are no significant threats to this species from fishing.

### Habitat and biology

The species is oceanic and makes diurnal vertical migrations from below 1,000 m in the day to near the surface at night. Males mature at about 38 cm total length (TL) and females at about 40 cm TL (Last and Stevens 2009). Nothing else is known of its biology.

Longevity and maximum size	Longevity: unknown Max size: ~50 cm TL
Age and/or size at maturity (50%)	Males: ~38 cm TL Females: ~40 cm TL

**Link to IUCN Page:** <http://www.iucnredlist.org/details/41830/0>

**Link to page at Shark References:** <http://www.shark-references.com/species/view/Isistius-brasiliensis>

#### References

Last, P.R. and Stevens, J.D. 2009. Sharks and Rays of Australia. Second edition. CSIRO, Australia.